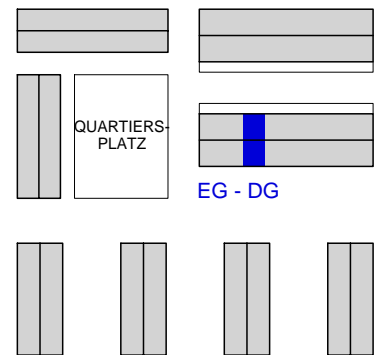
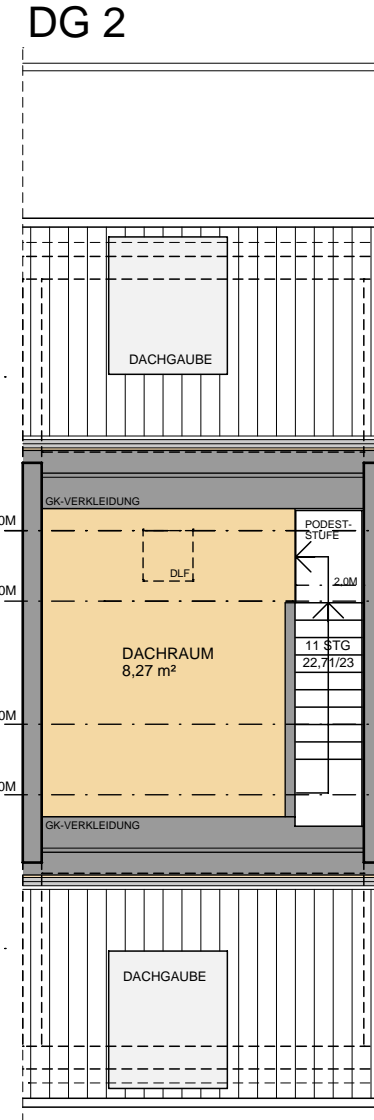
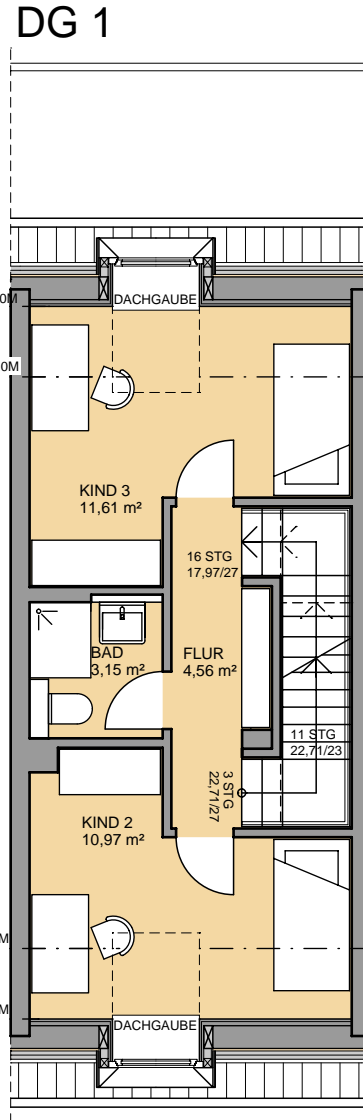
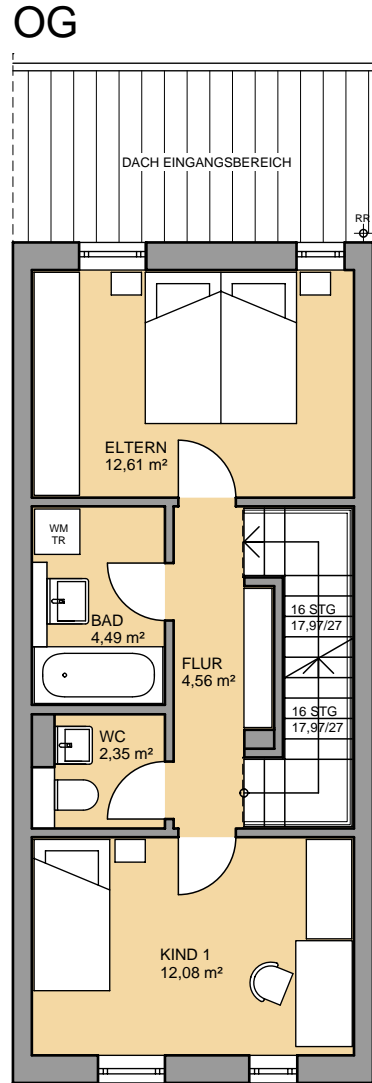
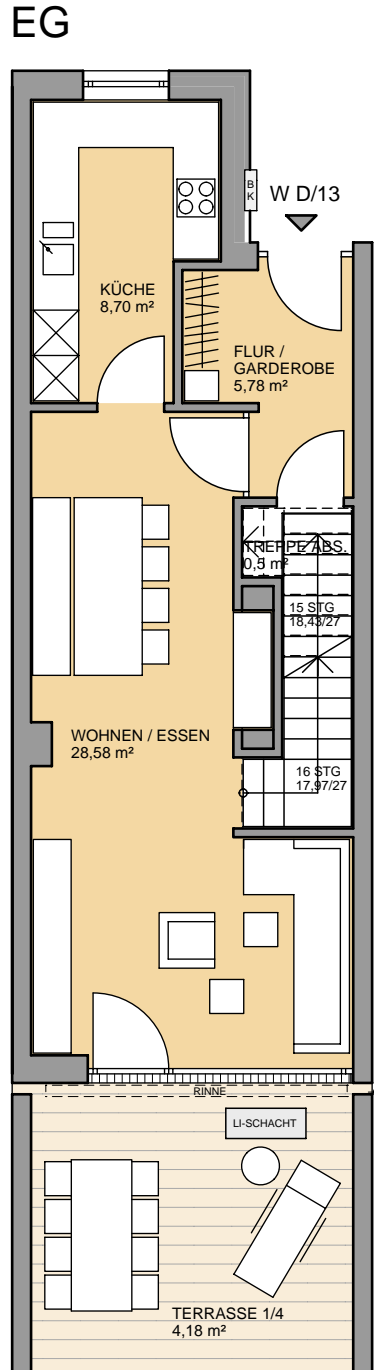
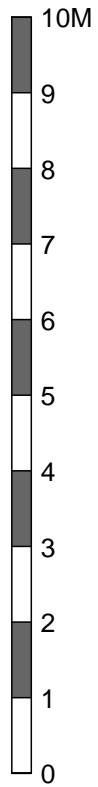




KWS REGENSBURG
WOHNQUARTIER
REGENSTAUF
 GEORG-HETTENKOFER-STRASSE 1-22

WOHNUNG D/13
5 - ZI - WE 113,62m²

NICHT EOF - GEFÖRDERT
 NICHT BARRIEREFREI
 ZUGEHÖRIGER -
 KELLERRAUM CA. 28,8 m²



LAGE DER WOHNUNG IM QUARTER

BLASCH ARCHITEKTEN REGENSBURG



M 1/100

STAND : 30.11.2020